

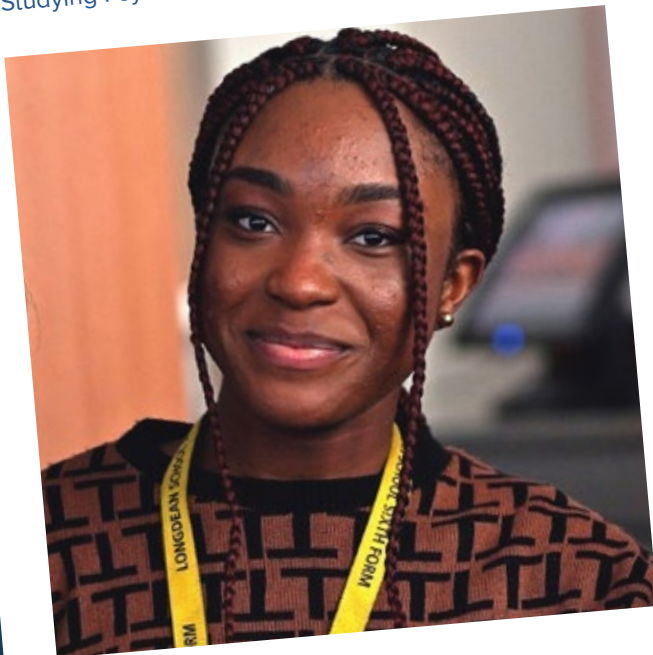
Sixth



LONGDEAN
SIXTH FORM

September 2021

Chrystal, School Captain, Year 13
Studying Psychology, Sociology and Product Design



♡ 210 likes

My favourite subject is psychology and, after school, I hope to go to university and study hard to get the best degree and make my mum proud. Sixth Form's been great, and whenever I've felt overwhelmed by things at home or schoolwork, the staff and teachers have always been there for me to talk to. I've never felt judged by them when I've needed help.

#Sixthform #sixthformer #bestdegree #proudmum
#rejoiceinyouth

A warm welcome to Longdean Sixth Form

Whether you are joining from the main school, or coming to us for the first time in Year 12, we promise a warm welcome at Longdean Sixth Form. You will be joining a school whose goal is for every student to leave with control and choice over their future. To achieve this, we support students to develop both academic and social skills, and challenge them to achieve their very best. While qualifications may get you an interview, it's your character and personality that will ensure you get the role and succeed in it.

Appointing and developing the best teachers is key to our goal. Our teaching team are enthusiastic about their subjects and have high expectations of all students. They use a range of approaches to ensure students understand key content and concepts before building and applying their knowledge.

Longdean is a non-selective Sixth Form, which means if you apply to join us, you will get a place. We will work with you to find a suite of courses – academic and vocational – that's right for you, and you'll be taught in an outstanding learning environment with a dedicated, two-floor post-16 area offering spaces to study, exercise and socialise. Our school week also reflects the world of higher education and work; for one day a week, students can choose to study at school or at home, to volunteer or do paid work alongside their studies.

The impact of our innovation, support and high expectations can be seen in our results – 60% of our students achieve grades A* to B at A level. Longdean also consistently has one of the best value-added scores locally, with all students going onto higher education (often at Cambridge or Russell Group universities) or finding employment after a successful experience with us. Personalised careers and education advice ensures that students are well matched to their next destinations.

Academic progress is, however, just one measure of a well-rounded post-16 experience. Throughout Sixth Form, our students have numerous opportunities to develop and grow as individuals. Many choose to undertake the Duke of Edinburgh Award, while others give back to their communities by tutoring younger students. These activities develop resilience and leadership alongside self-awareness and social skills – key qualities valued in any community.

The final piece of the jigsaw is our high level of pastoral care. We have a dedicated learning mentor, counsellor and post-16 tutor team to support students, and we work hard to ensure our students' voices are heard.

We look forward to you joining us.

Mr Graham Cunningham
Headteacher

Meet the Sixth Form team

Charlotte Keith Head of Sixth Form

We are proud of our Sixth-Form students and what they achieve through their hard work and dedication. They are active participants in our school community as well as being role models for our younger students. Our Sixth Form offers a wide range of subjects and the ability to combine academic and vocational qualifications. All learning is personalised to suit individual needs, and teaching is of the highest quality. As well as supporting their academic achievement, we provide our Sixth Formers with opportunities, through our PSHE and tutoring programmes, careers guidance and enrichment activities, to develop skills beyond the classroom that will benefit them later in life.



Kay Munjic Sixth Form Manager

In the Sixth Form, our post-16 manager provides additional support for students and works closely with the wider team – the Head of Sixth Form, form tutors, careers adviser, family support and the school counsellor. Together, we are committed to ensuring the wellbeing of our students and providing a caring, friendly and supportive environment so they have the best possible learning experience. Our ‘open-door policy’ enables them to easily access support or guidance whenever they need it. We also believe it’s important to work together holistically with students and their families to meet individual needs. At Longdean, we’re committed to helping our students develop emotionally and academically into adults who are prepared for life beyond school.

Alice, Year 13

Studying Geography, Computer Science and English Literature



♡ **210 likes**

My favourite memory of Sixth Form so far was the computer science trip to Berlin. The trip itself was a great experience and we did so many activities in the few days we were there. It was also a good chance to get to know some of people who I had never really spoken to before.

#Sixthform #sixthformer #berlin #favouritememory
#rejoiceinyouth

Aiden, Year 13

Studying Music, Performing Arts (Dance) and
Travel and Tourism



♡ 210 likes

When I was struggling with my university application, a member of Sixth Form staff sat down with me to go through everything that I needed. Because they teach the subject I'm applying for, they also knew how I should present myself, which I found very beneficial.

#Sixthform #sixthformer #goingtouni #performingarts
#rejoiceinyouth

Individual support for every student

As a small Sixth Form of around 200 students, we can get to know each student well, and provide personalised support based on your needs and ambitions. This support can range from practical advice on creating compelling applications for university, employment or traineeships, right through to support with emotional, social or other issues that may arise during your time with us.

Weekly tutor group sessions provide an opportunity to meet students outside of your subject groups, and also to discuss your progress with your tutor and seek guidance where needed. While we encourage Sixth Form students to develop independence and prepare for young adulthood, we also recognise the important role that family can play in our students' lives. Your tutor will act as the link between Sixth Form and home, and will normally be the first point of contact for parents.

Our practical support extends to a bursary scheme for students from lower-income families who are committed to studying at Longdean Sixth Form. For those eligible, the bursary can help

pay for school trips, books, clothing to enable you to meet the dress code, stationery, university visits, transport to and from school etc. We strive to be an inclusive community and strongly encourage any families who may be eligible for our bursary to apply, rather than miss out on the opportunity of a first-class Sixth Form education.

To ensure that all our Sixth Formers have access to the right equipment, we offer a 1:1 leasing scheme for laptops, which can be used within school and also taken home.

Flexible Fridays

Our four-day week means that students who need to balance paid work with studying can work on Fridays as an alternative to working evenings or weekends. As there are no lessons on this day, it also provides an opportunity to come into Sixth Form to study independently and take part in extra-curricular activities amongst other options.

Broad choice of A level and vocational options...

We want all students to find a relevant and interesting set of subjects to study at Longdean Sixth Form, choosing from a wide range of academic and vocational courses, with the option of taking a blend of each. We review our course selection each year, adapting our options based on student demand. For September 2021, for example, we have added French and Politics A levels and a Criminology Applied Diploma to our subject choices.

While A level assessment is linear with some coursework and all exams at the end of Y13, for vocational courses the assessment is modular. Coursework and exams are spread across Y12 and Y13.

Our comprehensive vocational courses offer spans everything from Business Studies to Forensic and Criminal Investigation, Health and Social Care to Sport. Our range of A levels is equally diverse, with Modern Foreign Languages, all three Sciences, Humanities and both Art and Design and Product Design amongst the choices on offer.



J-Dean, Year 11

Interested in the Foundation to A level course, followed by vocational courses such as Health and Social Care



♡ 210 likes

I've loved being at Longdean since Year 7. The support I've received has been amazing, and I wouldn't even be thinking about joining the Sixth Form had it not been for my teachers – their help and advice has got me here! I plan on taking the opportunity to improve my GCSE grades via the Foundation course, which will hopefully give me wider choices for the future.

#Sixthform #sixthformer #goingtosixthform
#amazingsupport #rejoiceinyouth

Lewis, Year 13

Studying Physics, Maths, Further Maths and Chemistry



♡ 210 likes

I have got an offer from the University of Cambridge to read Engineering, and I am planning to go there in September. Longdean was incredibly supportive during my application to Cambridge. The school put on many talks with current and former Oxbridge students and organised practice interviews with senior members of staff to strengthen my interview skills. Throughout the process, the school encouraged me to be aspirational, and aim for a very competitive university.

#sixthform #sixthformers #Alevels #didnthedowell
#cambridgeUni #rejoiceinyouth

Preparing you for your next steps

We are also one of very few Sixth Forms that offer an A level Foundation course. This is designed to equip students who haven't achieved Grades 4 or above in English and/or Maths, to take the next steps in their academic or employment journey.

A level foundations courses

Our A level Foundation course includes GCSEs in English, Maths, Biology, Financial Studies and an HPQ (Higher Project Qualification, equivalent to a GCSE) which gives students the opportunity to write an extended essay on a subject of their choice. This innovative, second-chance Foundation course is a real success; every year more than 50% of students go on to pursue Level 3 qualifications at Longdean, or a different college of their choice.

PSCHE

To support the all-round development of students, we also offer an hour of PSCHÉ and one prefect duty each week, plus two hours of community volunteering every fortnight. These sessions allow students to play a key role in both the school and their community, and to build vital communication, mentoring and work experience skills.

We have one of the best value-added scores of all local schools at Key Stage 5, meaning that students make better than expected progress with us. At A level 60% of students achieve grades A* to B and more than 30% achieve exclusively A* and As.

Ninety-eight per cent of students leave Longdean Sixth Form and go into employment, training or university. Each year 25% of students get offers from top universities including Russell Group and Oxbridge.



Dedicated area to learn, exercise and socialise

While there are many benefits to being part of a school environment, we understand that our Sixth Formers appreciate having their own area to learn and study. Our dedicated Sixth Form area occupies two floors and provides comfortable, quiet working spaces, as well as communal areas to socialise. Our newly refurbished gym and brand new café, scheduled to open in Autumn 2021, means we can provide a full range of services for a productive school day without the need to leave the school, although, of course, our Sixth Formers are entitled to do so if they wish!

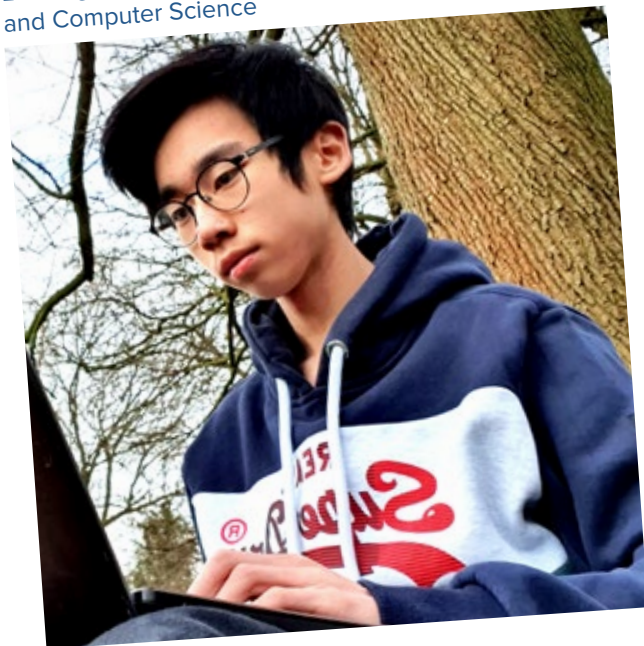
As well as leaving us with a great set of qualifications ready to take their next steps, we encourage Sixth Formers to take advantage of the range of opportunities we provide to develop as well-rounded people. These are aimed at building confidence, developing leadership, communication and collaboration skills and allowing students to demonstrate resilience and responsibility.

Opportunities include participating in recreational and sporting activities, engaging in community volunteering, either within school or in the wider community and taking part in a wide range of social and academic activities. Many school clubs and sports teams welcome the support and leadership of our Sixth Form, and Sixth Formers play an important role in helping younger pupils adjust to secondary education, as well as offering assistance in lessons.



Hanying, Year 11

Looking to study A levels in Sciences, Maths, Physics and Computer Science



♡ 210 likes

The support Longdean provides, not just in but outside of school, is outstanding. I don't believe I'd be achieving the grades I'm getting now without the excellent teacher support here. After finishing my GCSEs, I plan to go to Sixth Form to study A levels in Mathematics, Further Mathematics, Physics and Computer Science.

[#sixthform](#) [#sixthformers](#) [#Alevels](#) [#rejoiceinyouth](#)

Ready to apply?

Students applying to our Sixth Form will be expected to meet two conditions.

The first is academic and concerns performance at GCSE.

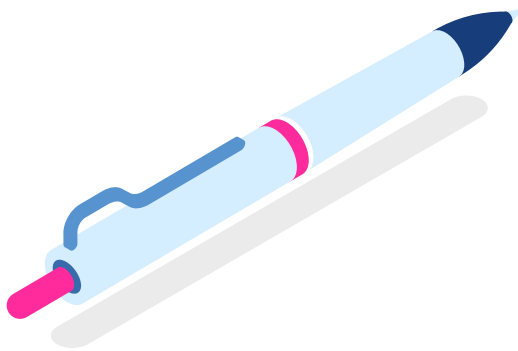
- Students wishing to join us for A levels or vocational courses need to have achieved 5 GCSEs at Grade 4 or above (including English and Maths).
- For students who do not have these grades, there is the option to take the Level 2/A level Foundation year, for which students need GCSEs at Grades 2 or 3.

You should only apply to the course if you match the above conditions, plus those attached to the courses you would like to do. For more information, visit www.longdeanschool.co.uk.

The final condition relates to behaviour and attitude to work.

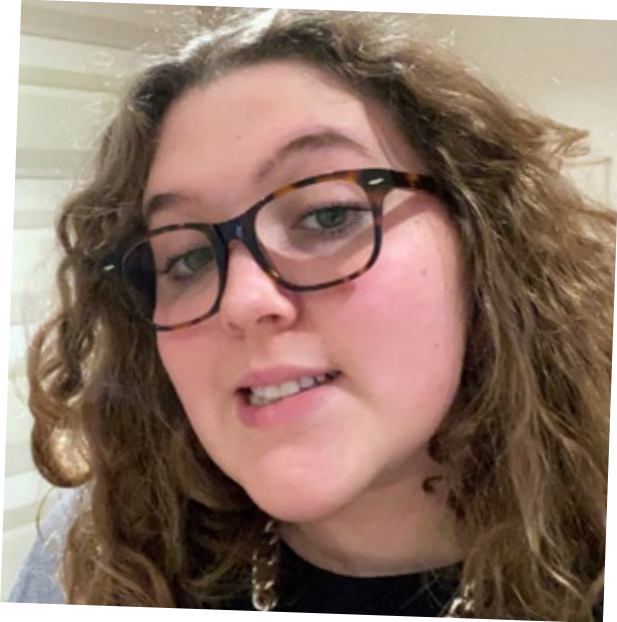
Much is expected in the way of self-discipline, motivation and ambition. Applicants must have demonstrated these qualities during their GCSE years to qualify for admission to our Sixth Form. Each Sixth Former must sign and adhere to a contract covering all aspects of Sixth Form life including: attitude to learning, punctuality and attendance, dress code and meeting deadlines. Any students found to be in breach of this contract will be sanctioned, may lose the privilege of the four-day week, or may ultimately be asked to leave.

Each student taking three A levels will also be required to take up a weekly enrichment activity to support their studies. It will be either an Extended Project Qualification (EPQ), additional study skills or community service. Some students may be directed to take study skills if it is deemed necessary.



Melody, Year 12

Studying Biology, Chemistry and Psychology as well as Core Maths and EPQ



♡ 210 likes

When I needed careers guidance, my form tutor pointed me in the right direction, showing me lots of websites and giving me sound advice. That gave me more confidence in my choices. Longdean has really helped me work towards my dream of pursuing a career in medicine, offering online courses and work-experience opportunities that look good on my personal statement.

#Sixthform #sixthformer #medicine #careerpathway
#rejoiceinyouth

Longdean School
Rumballs Road
Hemel Hempstead
Hertfordshire
HP3 8JB

01442 217277
admin@longdean.herts.sch.uk

